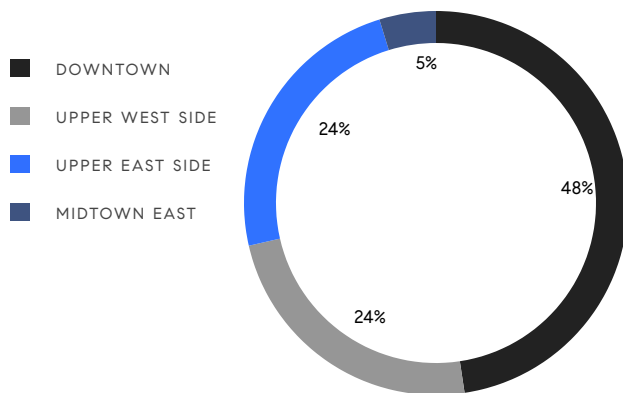


# MANHATTAN WEEKLY LUXURY REPORT



20 BANK STREET

RESIDENTIAL CONTRACTS  
\$5 MILLION AND UP



21  
CONTRACTS SIGNED  
THIS WEEK

\$282,300,000  
TOTAL CONTRACT VOLUME

The Manhattan luxury real estate market, defined as all properties priced \$5M and above, saw 21 contracts signed this week, made up of 11 condos, 3 co-ops, and 7 houses. The previous week saw 21 deals. For more information or data, please reach out to a Compass agent.

**\$13,442,858**

AVERAGE ASKING PRICE

**\$8,400,000**

MEDIAN ASKING PRICE

**\$2,943**

AVERAGE PPSF

**2%**

AVERAGE DISCOUNT

**\$282,300,000**

TOTAL VOLUME

**191**

AVERAGE DAYS ON MARKET

Unit PHW at 125 Perry Street in the West Village entered contract this week, with a last asking price of \$57,500,000. This upcoming condo spans 7,109 square feet with 5 beds and 7 full baths. It features an open dining and living space with fireplace, a kitchen with large center island, a den/library, a family room with terrace access, a primary bedroom with en-suite bath and dressing area, a tiered roof terrace with outdoor kitchen area, and much more. The building provides a full-time doorman, a private driveway, a weight room, a sport court, and many other amenities.

Also signed this week was Unit THW at 125 Perry Street, with a last asking price of \$32,000,000. This unit spans 6,821 square feet with 4 beds and 4 full baths. It features a dining room and bar with pocket doors, a kitchen with large center island and prep area, a spacious open living room with fireplace and first-level terrace access, a primary bedroom with dual walk-in closets and en-suite bath, a library/study, a wine cellar and storage area, a theater, and much more.

**11**

CONDO DEAL(S)

**3**

CO-OP DEAL(S)

**7**

TOWNHOUSE DEAL(S)

**\$16,154,546**

AVERAGE ASKING PRICE

**\$8,315,000**

AVERAGE ASKING PRICE

**\$11,379,286**

AVERAGE ASKING PRICE

**\$8,400,000**

MEDIAN ASKING PRICE

**\$7,450,000**

MEDIAN ASKING PRICE

**\$8,995,000**

MEDIAN ASKING PRICE

**\$3,668**

AVERAGE PPSF

**\$1,928**

AVERAGE PPSF

**3,831**

AVERAGE SQFT

**5,642**

AVERAGE SQFT



### 125 PERRY ST #PHW

West Village

TYPE	CONDO	STATUS	CONTRACT	ASK	\$57,500,000	INITIAL	N/A
SQFT	7,109	PPSF	\$8,089	BEDS	5	BATHS	7
FEES	\$31,696	DOM	N/A				



### 125 PERRY ST #THW

West Village

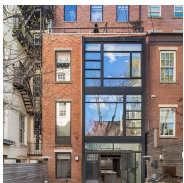
TYPE	CONDO	STATUS	CONTRACT	ASK	\$32,000,000	INITIAL	N/A
SQFT	6,821	PPSF	\$4,692	BEDS	4	BATHS	4
FEES	\$28,872	DOM	N/A				



### 125 PERRY ST #3E

West Village

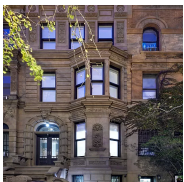
TYPE	CONDO	STATUS	CONTRACT	ASK	\$22,500,000	INITIAL	N/A
SQFT	4,174	PPSF	\$5,391	BEDS	3	BATHS	4
FEES	\$17,014	DOM	N/A				



### 109 WAVERLY PL

Greenwich Village

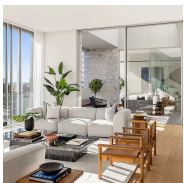
TYPE	TOWNHOUSE	STATUS	CONTRACT	ASK	\$19,995,000	INITIAL	\$24,950,000
SQFT	8,300	PPSF	\$2,410	BEDS	6	BATHS	6
FEES	\$4,499	DOM	595				



### 25 WEST 88TH ST

Upper West Side

TYPE	TOWNHOUSE	STATUS	CONTRACT	ASK	\$17,995,000	INITIAL	\$17,995,000
SQFT	8,068	PPSF	\$2,231	BEDS	6	BATHS	6
FEES	\$10,800	DOM	330				



### 527 WEST 27TH ST #PHA

Chelsea

TYPE	CONDO	STATUS	CONTRACT	ASK	\$17,995,000	INITIAL	\$19,950,000
SQFT	4,552	PPSF	\$3,954	BEDS	4	BATHS	4.5
FEES	\$21,594	DOM	419				

Compass is a licensed real estate broker and abides by Equal Housing Opportunity laws. All material presented herein is intended for informational purposes only. Information is compiled from sources deemed reliable but is subject to errors, omissions, changes in price, condition, sale, or withdrawal without notice. No statement is made as to the accuracy of any description. All measurements and square footages are approximate. This is not intended to solicit property already listed. Nothing herein shall be construed as legal, accounting or other professional advice outside the realm of real estate brokerage.



### 137 WEST 77TH ST

Upper West Side

TYPE	TOWNHOUSE	STATUS	CONTRACT	ASK	\$12,995,000	INITIAL	\$13,995,000
SQFT	6,815	PPSF	\$1,907	BEDS	5	BATHS	8
FEES	\$6,862	DOM	176				



### 1001 PARK AVE #8FL/7S

Upper East Side

TYPE	COOP	STATUS	CONTRACT	ASK	\$11,995,000	INITIAL	\$11,995,000
SQFT	N/A	PPSF	N/A	BEDS	5	BATHS	5.5
FEES	N/A	DOM	40				



### 100 EAST 53RD ST #53A

Midtown

TYPE	CONDO	STATUS	CONTRACT	ASK	\$9,450,000	INITIAL	\$9,450,000
SQFT	3,385	PPSF	\$2,792	BEDS	3	BATHS	3.5
FEES	\$13,199	DOM	N/A				



### 14 BANK ST

West Village

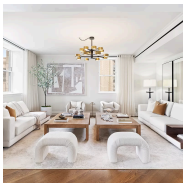
TYPE	TOWNHOUSE	STATUS	CONTRACT	ASK	\$8,995,000	INITIAL	\$8,995,000
SQFT	3,600	PPSF	\$2,499	BEDS	4	BATHS	5
FEES	\$2,046	DOM	98				



### 21 EAST 12TH ST #20A

Greenwich Village

TYPE	CONDO	STATUS	CONTRACT	ASK	\$8,400,000	INITIAL	\$8,400,000
SQFT	2,679	PPSF	\$3,136	BEDS	4	BATHS	4.5
FEES	\$8,556	DOM	21				



### 344 WEST 72ND ST #1101

Upper West Side

TYPE	COOP	STATUS	CONTRACT	ASK	\$7,450,000	INITIAL	\$7,450,000
SQFT	3,600	PPSF	\$2,070	BEDS	4	BATHS	4
FEES	\$6,358	DOM	175				

Compass is a licensed real estate broker and abides by Equal Housing Opportunity laws. All material presented herein is intended for informational purposes only. Information is compiled from sources deemed reliable but is subject to errors, omissions, changes in price, condition, sale, or withdrawal without notice. No statement is made as to the accuracy of any description. All measurements and square footages are approximate. This is not intended to solicit property already listed. Nothing herein shall be construed as legal, accounting or other professional advice outside the realm of real estate brokerage.



### 165 EAST 64TH ST

Upper East Side

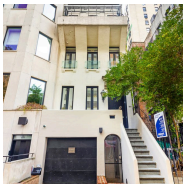
TYPE	TOWNHOUSE	STATUS	CONTRACT	ASK	\$7,000,000	INITIAL	N/A
SQFT	4,000	PPSF	\$1,750	BEDS	4	BATHS	4
FEES	\$6,940	DOM	N/A				



### 500 WEST 18TH ST #WEST-31D

West Chelsea

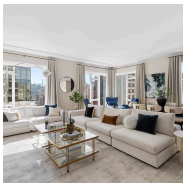
TYPE	CONDO	STATUS	CONTRACT	ASK	\$6,995,000	INITIAL	\$6,995,000
SQFT	1,823	PPSF	\$3,838	BEDS	2	BATHS	2.5
FEES	\$6,897	DOM	N/A				



### 310 EAST 69TH ST

Upper East Side

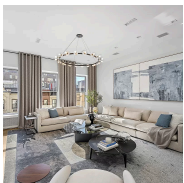
TYPE	TOWNHOUSE	STATUS	CONTRACT	ASK	\$6,925,000	INITIAL	\$6,925,000
SQFT	4,375	PPSF	\$1,371	BEDS	4	BATHS	5
FEES	\$4,370	DOM	20				



### 1289 LEXINGTON AVE #10B

Upper East Side

TYPE	CONDO	STATUS	CONTRACT	ASK	\$6,150,000	INITIAL	\$6,150,000
SQFT	3,078	PPSF	\$1,999	BEDS	4	BATHS	4.5
FEES	\$9,419	DOM	N/A				



### 29 WEST 85TH ST #PH

Upper West Side

TYPE	CONDO	STATUS	CONTRACT	ASK	\$5,895,000	INITIAL	\$5,895,000
SQFT	3,140	PPSF	\$1,878	BEDS	3	BATHS	3.5
FEES	\$5,841	DOM	20				



### 137 WEST 87TH ST

Upper West Side

TYPE	TOWNHOUSE	STATUS	CONTRACT	ASK	\$5,750,000	INITIAL	\$5,750,000
SQFT	4,330	PPSF	\$1,328	BEDS	5	BATHS	3
FEES	\$2,670	DOM	59				

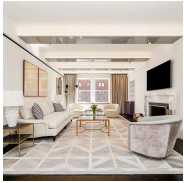
Compass is a licensed real estate broker and abides by Equal Housing Opportunity laws. All material presented herein is intended for informational purposes only. Information is compiled from sources deemed reliable but is subject to errors, omissions, changes in price, condition, sale, or withdrawal without notice. No statement is made as to the accuracy of any description. All measurements and square footages are approximate. This is not intended to solicit property already listed. Nothing herein shall be construed as legal, accounting or other professional advice outside the realm of real estate brokerage.



### 259 BOWERY #3/4

Lower East Side

TYPE	CONDO	STATUS	CONTRACT	ASK	\$5,750,000	INITIAL	\$5,999,000
SQFT	3,700	PPSF	\$1,555	BEDS	3	BATHS	2.5
FEES	\$6,525	DOM	139				



### 1130 PARK AVE #7/3

Upper East Side

TYPE	COOP	STATUS	CONTRACT	ASK	\$5,500,000	INITIAL	\$6,250,000
SQFT	N/A	PPSF	N/A	BEDS	4	BATHS	3.5
FEES	\$6,404	DOM	303				



### 500 WEST 18TH ST #W21F

West Chelsea

TYPE	CONDO	STATUS	CONTRACT	ASK	\$5,065,000	INITIAL	\$4,965,000
SQFT	1,678	PPSF	\$3,019	BEDS	2	BATHS	2
FEES	N/A	DOM	271				

Compass is a licensed real estate broker and abides by Equal Housing Opportunity laws. All material presented herein is intended for informational purposes only. Information is compiled from sources deemed reliable but is subject to errors, omissions, changes in price, condition, sale, or withdrawal without notice. No statement is made as to the accuracy of any description. All measurements and square footages are approximate. This is not intended to solicit property already listed. Nothing herein shall be construed as legal, accounting or other professional advice outside the realm of real estate brokerage.